



Bear estate agent are pleased to offer for rent this three bedroom family home, the property comes with communal parking, well maintained front and rear garden and a spacious lounge. Available Now!

- Terraced House
- Communal Parking
- Spacious Lounge
- Three Bedrooms
- Front and Rear Garden
- Available Now

## First Avenue

Canvey Island

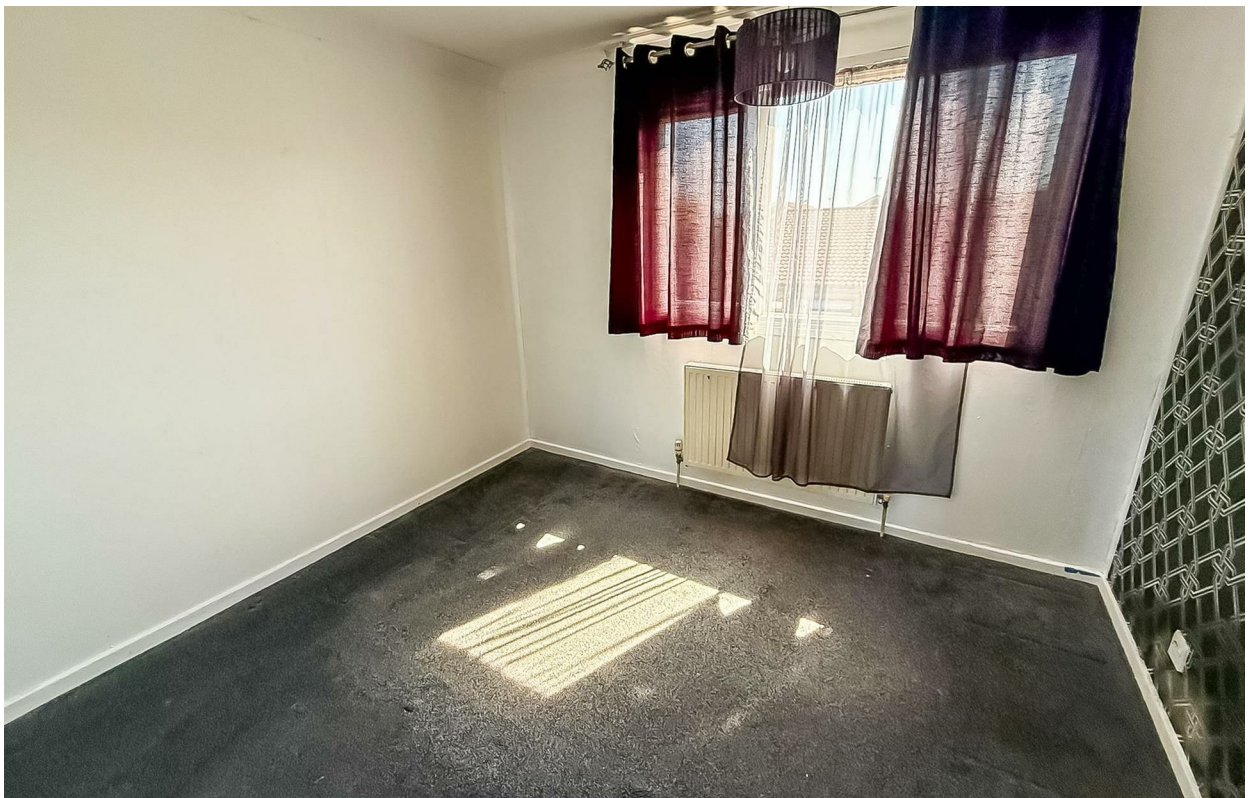
**£1,450 Per Month**

Per Month



# First Avenue

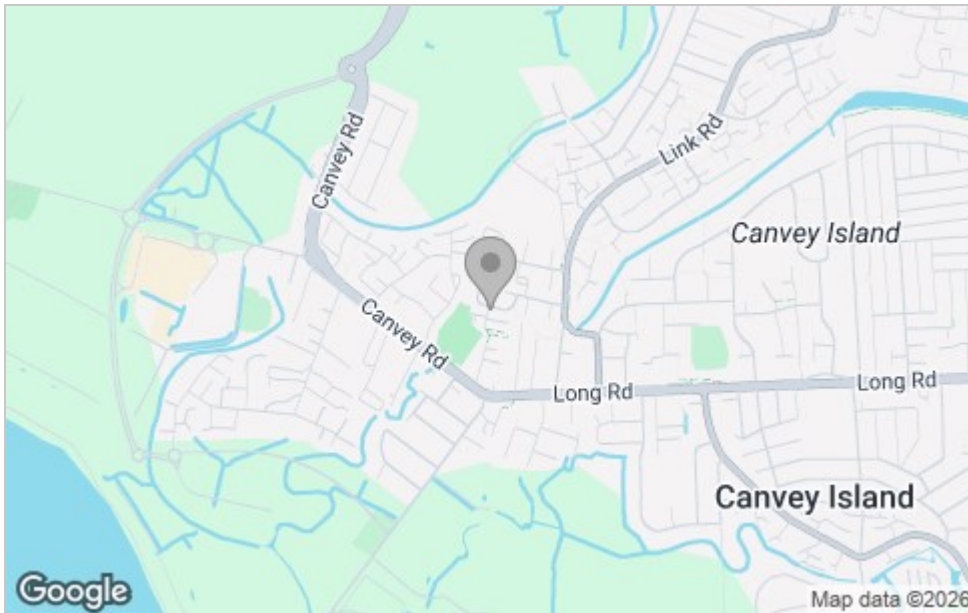




## Floor Plan



## Area Map



## Viewing

Please contact our Westcliff-on-Sea Office on 01702 899 780 if you wish to arrange a viewing appointment for this property or require further information.

These particulars, whilst believed to be accurate are set out as a general outline only for guidance and do not constitute any part of an offer or contract. Intending purchasers should not rely on them as statements of representation of fact, but must satisfy themselves by inspection or otherwise as to their accuracy. No person in this firm's employment has the authority to make or give any representation or warranty in respect of the property.

797 London Road, Westcliff-on-Sea, Essex, SS0 9SY

Office: 01702 899 780 [info@bearlettings.co.uk](mailto:info@bearlettings.co.uk)

## Energy Efficiency Graph

